



# INSTRUCTION BULLETIN

No. 340207  
Machine: ATLV 4300  
Published: 6-00/02  
System: OPTIONS

**NOTE: DO NOT DISCARD the Parts List from the Instruction Bulletin. Place the Parts List in the appropriate place in your machine manual for future reference. Retaining the Parts List will make it easier to reorder individual parts and will save you the cost of ordering an entire kit.**

*NOTE: Numbers in parenthesis ( ) are reference numbers for parts listed in Bill of Materials.*

Installation instructions for kit number 368106

## **SYNOPSIS / PROBLEM:**

This kit contains the parts needed to install a dust bag kit on the model ATLV 4300.  
Please follow step-by-step instructions.

## **SPECIAL TOOLS / CONSIDERATIONS:** None

(Estimated time to complete: 1 hour)

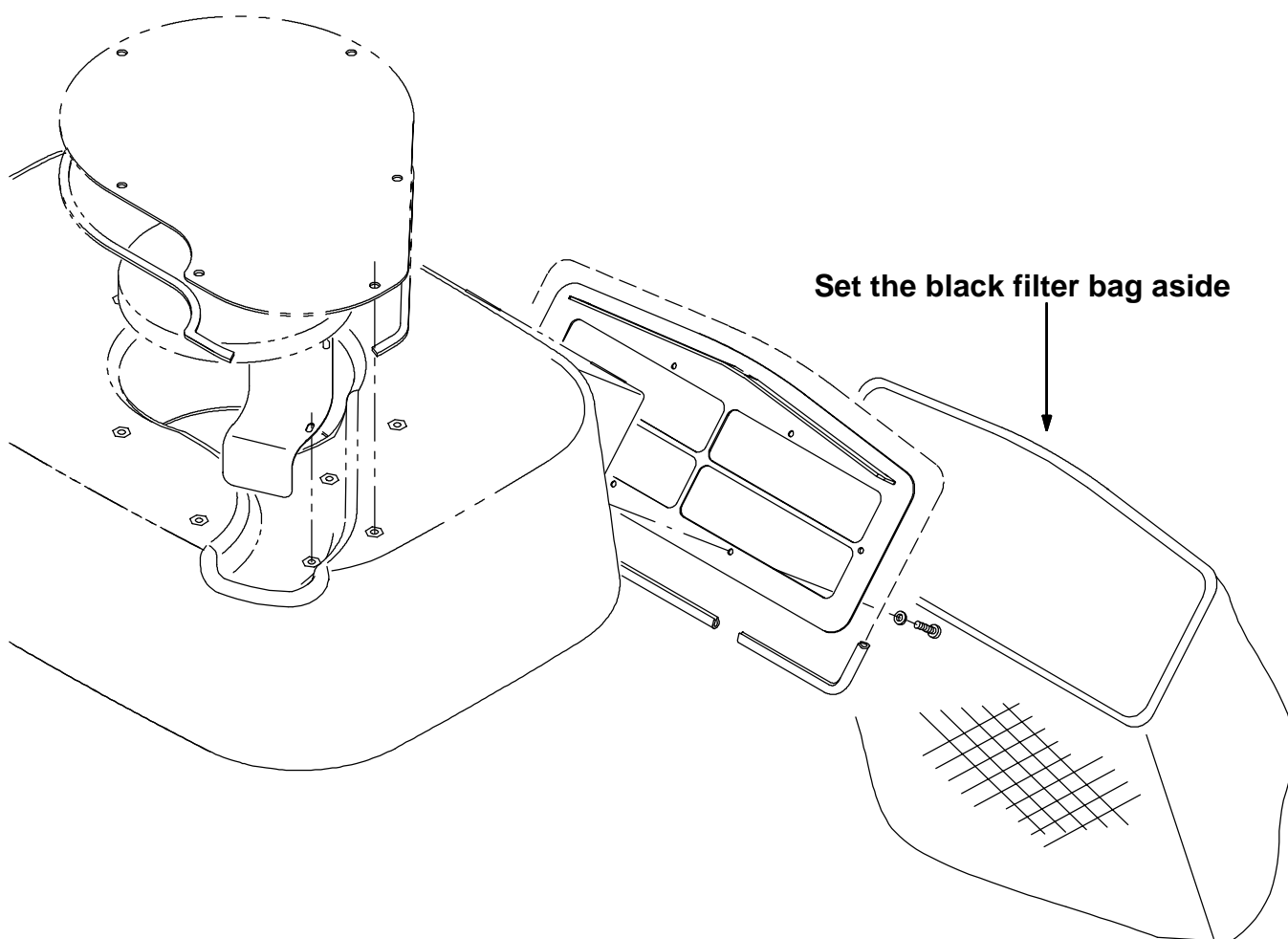
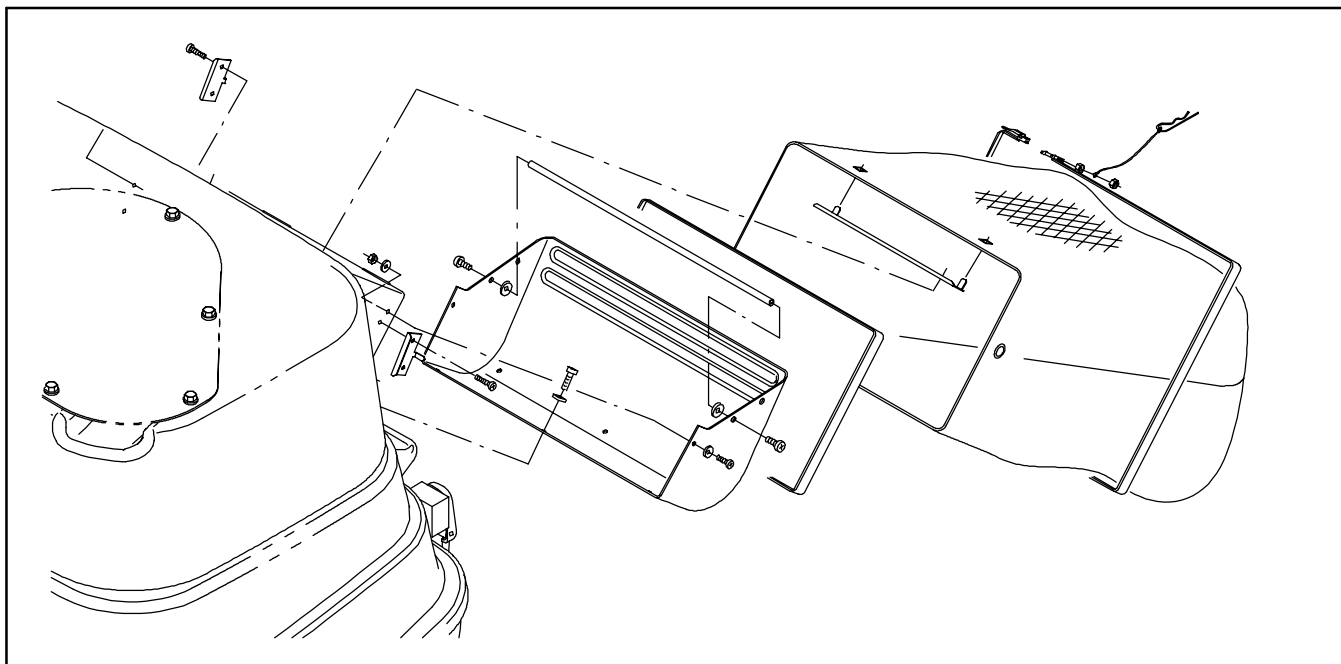
## **INSTALLATION:**

(Refer to FIG. 1 thru 3)

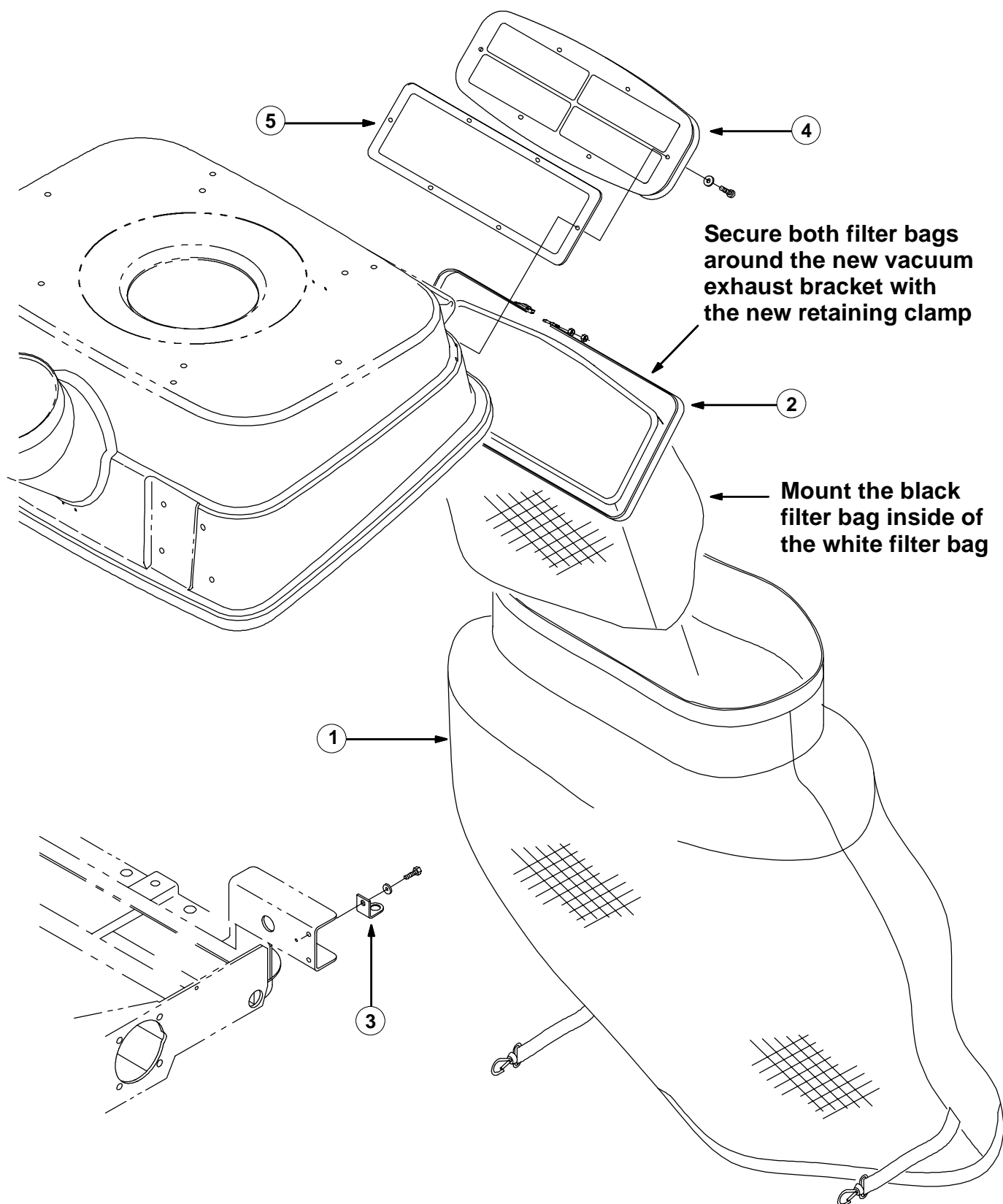
**FOR SAFETY: Before leaving or servicing machine, stop on level surface and set parking brake. Then turn off machine and remove key.**

*NOTE: Before this kit can be installed, Kit # 368107 Filter bag update kit may need to be installed.*

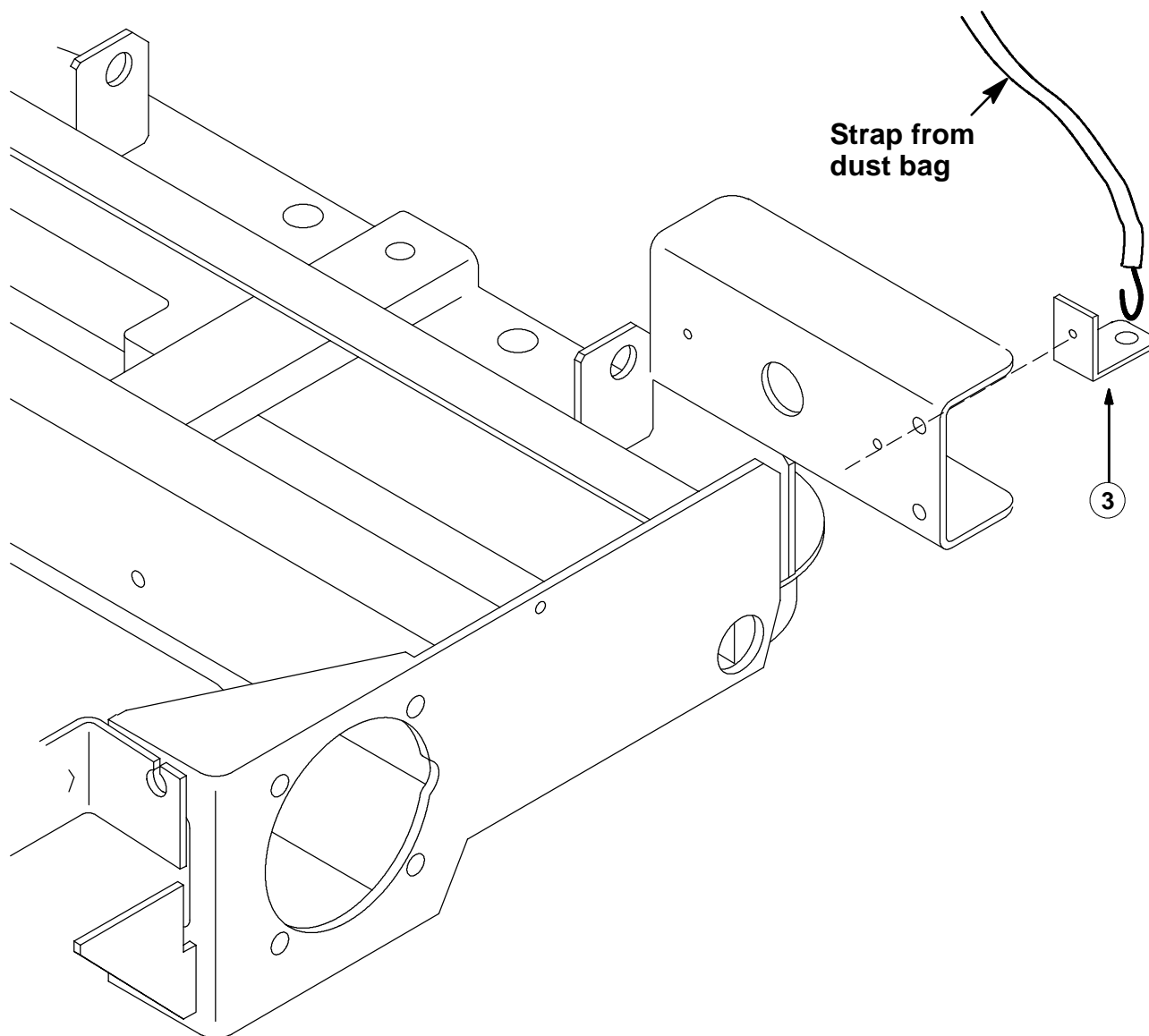
1. Remove the old filter bag assembly from the back of the debris hopper, and set the black filter bag and mounting hardware aside. (Refer to FIG. 1)
2. Remove the mounting hardware from the outside, upper corner of the machine taillights.
3. Install the angle brackets (3) with the removed hardware. The larger hole in the angle bracket should be facing down when mounted correctly. (Refer to FIG. 2 and 3)
4. Install the new vacuum exhaust plate (4) to the back of the debris hopper with the vacuum plate gasket (5). (Refer to FIG. 2)
5. Mount the old black filter bag over the new vacuum exhaust plate (4). (Refer to FIG. 2)
6. Install the new white dust bag (1) over the existing black filter bag and vacuum exhaust plate (4). (Refer to FIG. 2)
7. Secure the black filter bag, and the new dust bag (1) over the new vacuum exhaust plate (4) with the new retaining clamp (2). (Refer to FIG. 2)
8. Clip the ends of the new white dust bag (1) onto the new angle brackets (3).  
(Refer to FIG. 2 and 3)



**FIG. 1 -REMOVE OLD FILTER BAG ASSEMBLY**



**FIG. 2 - NEW FILTER BAG ASSEMBLY INSTALLATION**



**FIG. 3 - FILTER BAG ANGLE BRACKET**

**BILL OF MATERIALS FOR FILTER BAG KIT 368106**

Ref.	TENNANT Part No.	Description	Qty.
1	368329	Filter dust bag	1
2	368333	Clamp, retaining	1
3	368133	Angle, mtg.	2
4	368382	Bracket assy, vacuum exhaust	1
5	368224	Gasket, vacuum plate	1

TENNANT COMPANY  
P. O. Box 1452  
Minneapolis, MN 55440-1452